



INSTRUCTION MANUAL FOR SINGLE BARREL SHOTGUN

**READ THE INSTRUCTIONS AND
WARNINGS IN THIS MANUAL CAREFULLY
BEFORE USING THIS FIREARM**

INTRODUCTION

Thank you for purchasing the BALIKLI shotgun. We are sure this gun will bring you years of hunting or shooting pleasure.

This manual provides important information for using your new gun. Please read your Owner's Manual carefully before handling the gun.

Follow safe gun handling procedure at all times. Get instructions from a competent firearms instructor before using the firearm.

If you have questions or concerns about the assembly or the operation of your gun, see your dealer, or a qualified gunsmith.

Keep this manual, and consult it as needed. If you sell or transfer your gun, make sure the manual stays with the gun.

This shotgun, which is produced with the latest possibilities of the contemporary technology, is reliable and practical about its aesthetics, its lightness, its operating system and its expertise in service.

SAFETY RULES

SAFE GUN HANDLING IS YOUR PERSONAL RESPONSIBILITY AT ALL TIMES !

1. NEVER POINT A FIREARM AT SOMETHING THAT IS NOT SAFE TO SHOOT. Never let the muzzle of a firearm point at any part of your body or at another person. This is especially important when loading or unloading the firearm. When you are shooting at a target, know what is behind it. If you miss your target or if the bullet penetrates the target, it is your responsibility to ensure that the shot does not cause unintended injury or damage.

2. ALWAYS TREAT A FIREARM AS IF IT WERE LOADED. Never assume that a firearm is unloaded. The only certain way to ensure that a firearm is empty is to open the chamber and visually examine the inside to see if a round is present. Shotguns and rifles can be checked by cycling or removing all rounds and by then opening the chamber so that a visual inspection of the chamber for any remaining rounds can be made.

3. STORE YOUR FIREARM SO THAT CHILDREN CANNOT GAIN ACCESS TO IT. It is your responsibility to insure that children under the age of 18 or other unauthorized person does not gain access to your firearm. To reduce the risk of accidents involving children, unload your firearm, lock it and store the ammunition in a separate locked location. Please note that devices intended to prevent accidents - for example, cable locks, chamber plugs, etc, - may not prevent use or misuse of your firearm by a determined person. Steel gun safes may be more appropriate to reduce the likelihood of intentional misuse of a firearm by an unauthorized child or person.

4. NEVER SHOOT AT WATER OR AT A HARD SURFACE. Shooting at the surface of water or at a rock or other hard surface increases the chance of ricochets or fragmentation of the bullet or shot, which can result in the projectile striking an unintended or peripheral target.

5. KNOW THE SAFETY FEATURES OF THE FIREARM YOU ARE USING, BUT REMEMBER: SAFETY DEVICES ARE NOT A SUBSTITUTE FOR SAFE HANDLING PROCEDURES. Never rely solely on a safety device to prevent an accident. It is imperative that you know and use the safety features of the particular firearm you are handling, but accidents can best be prevented by following the safe handling procedures described in these safety rules and elsewhere in the product manual. To further familiarize yourself with the proper use of this or other firearms, take a

Firearms Safety Course taught by an expert in firearm use and safety procedures.

6. PROPERLY MAINTAIN YOUR FIREARM. Store and carry your firearm so that dirt or lint does not accumulate in the working parts. Clean and oil your firearm, following the instructions provided in this manual, after each use to prevent corrosion, damage to the barrel or accumulation of impurities which can prevent use of the gun in an emergency. Always check the barrel prior to loading to ensure that it is clean and free from obstructions. Firing against an obstruction can rupture the barrel and injure you or others nearby. In case you hear an unusual noise when shooting, stop firing immediately, engage the manual safety and unload the firearm. Make sure the chamber is free from any obstruction inside the barrel due to defective or improper ammunition.

7. USE PROPER AMMUNITION. Only use factory-loaded, new ammunition manufactured to industry specifications: CIP (Europe and elsewhere), SAAMI (U.S.A.). Be certain that each round you use is in the proper caliber or gauge and type for the particular firearm. The caliber or gauge of the firearm is clearly marked on the barrels of shotguns. The use of reloaded or remanufactured ammunition can increase the likelihood of excessive cartridge pressures, case-head ruptures or other defects in the ammunition that can cause damage to your firearm and injury to yourself or others nearby.

8. ALWAYS WEAR PROTECTIVE GLASSES AND EARPLUGS WHEN SHOOTING. The chance that gas, gunpowder or metal fragments will blow back and injure a shooter who is firing a gun is rare, but the injury that can be sustained in such circumstances is severe, including the possible loss of eyesight. A shooter must always wear impact resistant shooting glasses when firing any firearm. Earplugs help reduce the chance of hearing damage from shooting.

9. NEVER CLIMB A TREE, FENCE OR OBSTRUCTION WITH A LOADED FIREARM. Open and empty the chamber of your firearm before climbing or descending a tree or before climbing a fence or jumping over a ditch or obstruction. Never pull or push a loaded firearm toward yourself or another person.

10. AVOID ALCOHOLIC BEVERAGES OR JUDGMENT OR REFLEX IMPAIRING MEDICATION WHEN SHOOTING. Do not drink and shoot. If you take medication that can impair motor reactions or judgment, do not handle a firearm while you are under the influence of the medication.

11. NEVER TRANSPORT A LOADED FIREARM . Unload a firearm before putting it in a vehicle. Hunters and target shooters should load their firearm only at their destination. If you carry a firearm for self-protection, leaving the chamber unloaded can reduce the chance of accidental discharge.

12. LEAD WARNING. Discharging firearms in poorly ventilated areas, cleaning firearms, or handling ammunition may result in exposure to lead and other substances known to cause birth defects, reproductive harm, and other serious physical injury. Have adequate ventilation at all times. Wash hands thoroughly after exposure.

FOLLOW THE LAW: Obey all local, state and federal laws regarding storage, shooting and transporting your firearm.

WARNING: UNLOAD ALL FIREARMS WHEN NOT IN USE. NEVER STORE A LOADED FIREARM.

AMMUNITION

USE ONLY SUITABLE AMMUNITION

This single barrel shotgun is chambered for 3 inch shells. It is designed to be used with factory-loaded shells between 2 ¾ " and 3" in length. For 12 Gauge use the cartridges between 28 gr. (1 oz.) and 52 gr. (1⅞ oz.)

Use of re-loaded ammunition voids the factory warranty.

WARNING: Do not use 3 ½ inch shells in this shotgun.

WARNING: Never use cartridges with a case longer than the chamber, as this would have serious consequences for both the gun and the shooter.

WARNING: For your safety, use only original high quality commercially manufactured ammunition in good condition that is appropriate to the caliber/gauge of your gun.

BREAK OPEN LEVER

The Break Open Lever is located in front of the trigger guard and controls the locking of the breech of the barrel to the receiver. To open the gun, pull the Break Open Lever fully rearward and ease down the barrel.

NOTE: Pulling the Break Open Lever partially rearward will not disengage the locking of the breech. The Break Open Lever may appear to be pulled back fully rearward, but is not. Pulling the Break Open Lever slightly further will fully disengage the locking of the breech.

SAFETY BUTTON

The safety button is located at the rear of the trigger guard and must be manually moved to the desired position by the shooter.

To put the safety in the “SAFE” or “ON” position, the safety button must be pushed from the left side so that it moves all the way to the right. The button must always be pushed fully to the right until it moves no further to be in the “SAFE” or “ON” position.

The safety button is designed to function only as described above and should not be reversed. DO NOT attempt to remove or reverse the safety button. Doing so may result in an unsafe condition which can cause serious injury or death.

(See picture 1 and 2)



Picture 1



Picture 2

WARNING: Do not rely solely on your gun’s safety. Treat every gun as if it is loaded and ready to fire. The safety is a mechanical device and is not intended to serve as a substitute for common sense or safe gun handling. Always keep the muzzle pointed in a safe direction.

LOADING

WARNING: Read and understand all instructions and warnings in this manual before using this shotgun. It is important to learn the parts of your shotgun and their functions before using this firearm. Be sure of the target and what is beyond before firing.

To load your Single Barrel Shotgun, be sure the safety is in the “SAFE” or “ON” position, pull the Break Open Lever fully rearward and open the action. This will cause the lock to disengage and allow the barrel to pivot downward exposing the chamber. Insert shotshell of the appropriate gauge and size into the chamber.

When you are finished loading the chamber, close the breech by lifting up on the barrel and close the action. The Break Open Lever will make an audible “CLICK” when the breech is closed and locked.

FIRING

After inserting the shotshell into the chamber, close and lock the breech. Your shotgun is ready to fire. Disengage the safety by pushing the safety button to the “FIRE” or “OFF” position, the safety button must be pushed from the right side so that it moves all the way to the left. The button must always be pushed fully to the left until it moves no further to be in the “FIRE” or “OFF” position. This will display a red band marking around the safety as an indicator that the safety is in the “FIRE” or “OFF” position.

For this Single Barrel Shotgun, pulling the trigger through its full travel to the rear will fire the shotgun and discharge the shell.

CAUTION: In case of misfire, wait at least 30 seconds while keeping the gun pointed in a safe direction. Then, carefully open the action away from yourself and others. If the primer on the rim is indented, the shell should be discarded in a manner that would prevent accidental injury to you and/or those around you. If there is no indentation on the primer or rim, your gun has malfunctioned and should be serviced by a qualified gunsmith.

If at any time during firing, the sound of any shell is noticeably louder or softer than the previous shells fired, **STOP! DO NOT** load or fire additional shells until you have put the safety in the “SAFE” or “ON” position and safely unloaded your shotgun. Inspect the shotgun for possible damage or obstructions in the chamber or bore. (The bore is the inside surface of the barrel). Firing the shotgun with a bore obstruction can cause damage to the firearm may result in serious injury to you and/or those around you.

UNLOADING

Before unloading, check to assure that the safety is in the “SAFE” or “ON” position. At no time during unloading should you allow your fingers or any other object to touch the trigger.

Next, pull the Break Open Lever fully rearward and open the action. Pulling the barrel downward fully will partially elevate any fired or unfired shell in the chamber for easy removal by hand.

MAINTENANCE

Proper maintenance is important to assure the best functioning of the gun, and the safety of the shooter.

Before using the shotgun make sure the barrel is clean and free of any grease or obstruction.

CLEANING AND LUBRICATION

WARNING: Before cleaning or lubricating the shotgun, make sure it is unloaded and the safety “ON”.

Materials and equipment necessary for cleaning and lubrication;

- Cleaning rod
- Cotton bore patches
- Brass bore brush
- Powder solvent
- Small soft brush
- Good quality shotgun oil

Make sure the broad, polished finely fitted mating surface of the breech block and receiver is especially clean and lightly oiled with high quality gun oil. DO NOT use silicone or lanolin.

Run an oil patch through the bore with a cleaning rod starting from the breech end. To prevent leading, use a cleaning solvent and brass brush to clean the bore periodically. Follow this cleaning with one or two clean oil patches.

Wipe all exposed metal surfaces with an oiled cloth before storing. DO NOT squirt or pour oil into the inside mechanism, because it may hamper proper functioning. After extended periods of heavy use, your gun should be taken to a qualified gunsmith to have the action disassembled for professional cleaning and lubrication.

STORAGE

Clean thoroughly and oil your gun before storage. Store the gun in a case to prevent scratches and dents. Store your firearm in a dry place to prevent corrosion.

Store the gun away from children and in a place where it cannot be obtained by those unauthorized to use it. Always store gun unloaded and separately from any ammunition.

HAZARDOUS MATERIAL WARNING

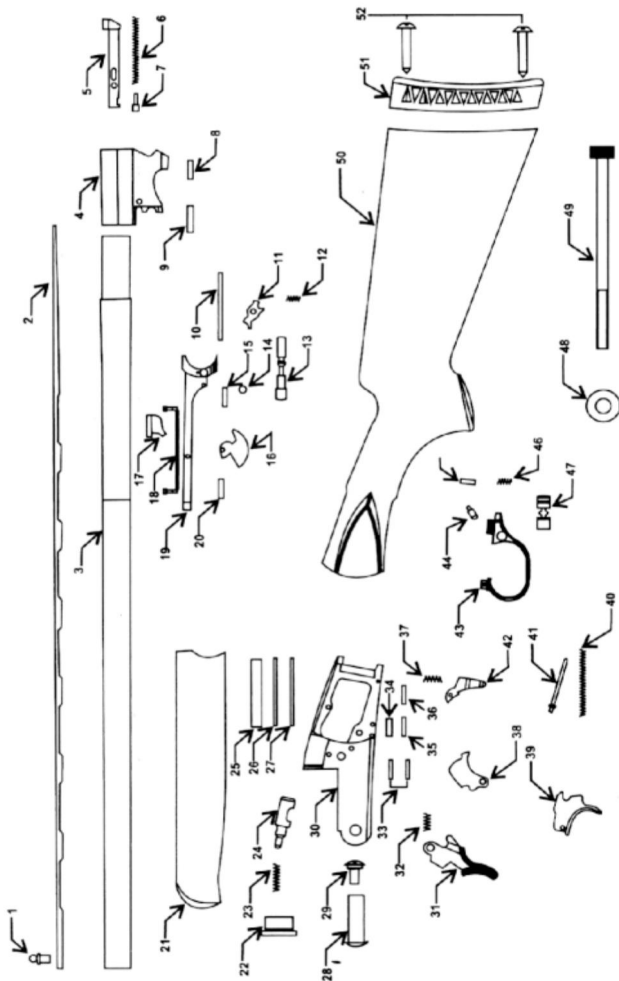
Discharging firearms in poorly ventilated areas, cleaning firearms, or handling ammunition, may result in exposure to lead and other substances known to cause birth defects, reproductive harm, and other serious injury. Have adequate ventilation at all times. Wash hands thoroughly after exposure.

GENERAL ASSEMBLY

<u>NO</u>	<u>PART NAME</u>	<u>NO</u>	<u>PART NAME</u>
1	Front Sight	27	Pin
2	Upper Rib	28	Receiver Pin
3	Barrel	29	Receiver Pin Screw
4	Mono Block	30	Receiver
5	Ejector	31	Lock
6	Ejector Spring	32	Lock Spring
7	Ejector Spring Pin	33	Trigger Guard Pin
8	Ejector Front Pin	34	Hammer Pin
9	Ejector Rear Pin	35	Trigger Pin
10	Forend Ejector Pin	36	Disconnecter Pin
11	Forend Bolt	37	Disconnecter Spring
12	Forend Bolt Spring	38	Hammer
13	Selector Pin	39	Trigger
14	Selector Ball	40	Hammer Spring
15	Selector Pin Pin	41	Hammer Spring Pin
16	Forend Lock	42	Trigger Propulsive Block
17	Forend Lock Part	43	Trigger Guard
18	Forend Steel Base Screw	44	Safety Plunger Spring Pin
19	Forend Steel Base	45	Safety Spring Retaining Pin
20	Forend Steel Base Pin	46	Safety Plunger Spring
21	Forend	47	Manual Safety
22	Forehead	48	Stock Bolt Lock Washer
23	Firing Pin Spring	49	Stock Bolt Screw
24	Firing Pin	50	Stock
25	Pin	51	Recoil Pad
26	Pin	52	Recoil Pad Screw

NOTE: BALIKLI Single Barrel Shotguns are designed with Non-Ejector (Extractor) sytems.

PARTS DIAGRAM



WARRANTY DEED

This product is covered by a 2-year guarantee by BALIKLI ARMS against faulty workmanship and manufacturing defects and BALIKLI ARMS agrees to supply free replacement parts (wood not included) for defected parts from date of purchase.

DISCLAIMER OF THE WARRANTY

- * Occurrence of damages due to firing with hand-filled or refilled cartridges
- * Occurrence of damages due to firing in case of blockage in the barrel
- * Occurrence of damages due to the lack of regular and necessary maintenance
- * Repairs and replacements made by unauthorized persons on guns are make warranty invalid.

Please note that certificates that are not sealed by the vendor or that are incomplete are invalid. By purchasing the product, the user acknowledges and agrees the foregoing.

- To be lled by the vendor -

Model /Calibre :

Serial No. :

Buyer's Name and Surname:

Sales Invoice No. :

Date of Sale :

[Vendor's seal and signature]



Üzümlü Mah. Köküstü Küme Evleri No. 12



Tel. +90 332 524 6 524 - 524 68 03



www.baliklisilah.com



Instagram

[instagram.com/balikli_arms_tactical](https://www.instagram.com/balikli_arms_tactical)



[facebook.com/Balikli Silah](https://www.facebook.com/BalikliSilah)

BEŞEHİR / KONYA

Fax. +90 332 524 68 01



info@baliklisilah.com



export@baliklisilah.com

Contact +90 530 099 32 93